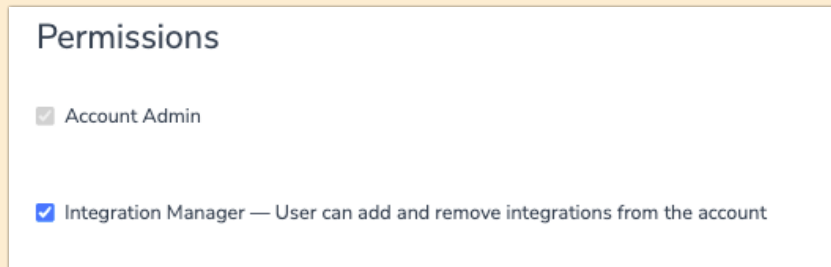


Assigning Integration Owners in Alchemer Workflow

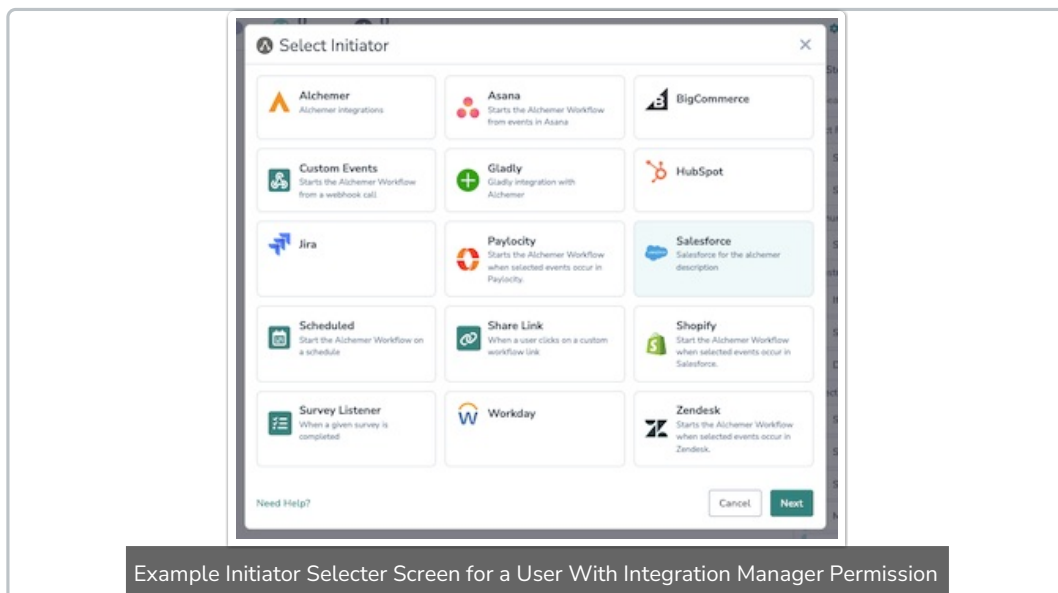
The Integration Manager permission is required to make changes to any integration in Alchemer Workflow. This requirement supersedes any team ownership, and it applies to the account admin as well.



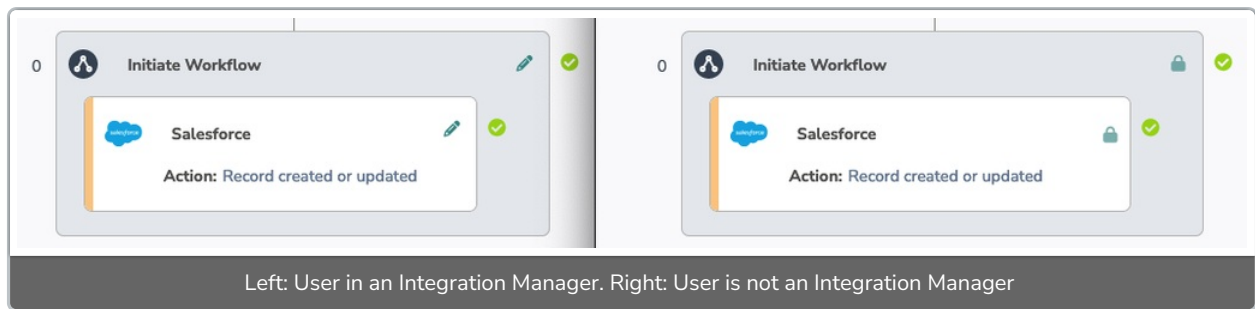
Ownership for Alchemer Workflow Initiators

When using an external integration as your Workflow initiator, the integration will automatically be assigned to the user's default team.

Initiators can only be added and edited by an Integration Manager.



Example Initiator Selector Screen for a User With Integration Manager Permission



Ownership for Alchemer Workflow Integration Steps

When adding an integration step in Alchemer Workflow, the Integration Manager is prompted to select a team that will own the integration.

Configure Integration

PRIMARY SETUP

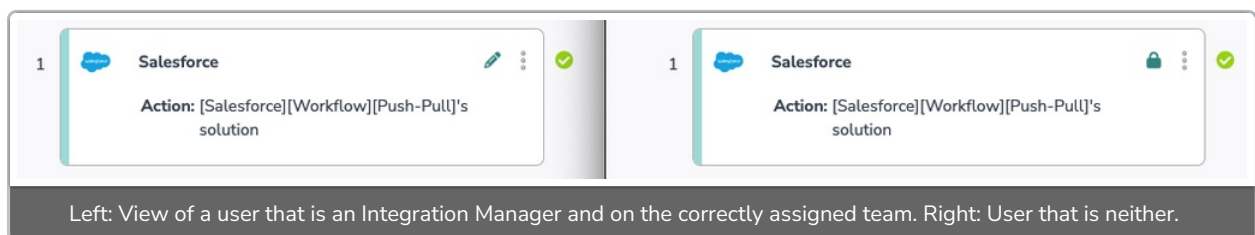
Select Team

Select the Alchemer Team that you would like to assign as the owner of this integration

Select a team ▼

**This cannot be changed*

After an Integration step is configured, only users that are both Integration Managers and a member of the owning team can edit it.



Related Articles